

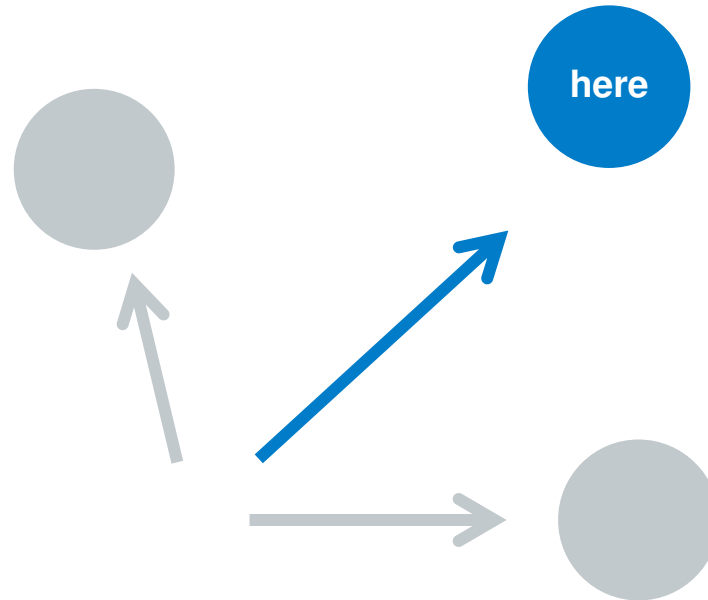
MSP IN SWEDEN

A wide-angle photograph of an offshore wind farm in the sea. The wind turbines are silhouetted against a cloudy, overcast sky. The water is a deep blue-green color. The turbines are arranged in a long, straight line across the horizon.

Tomas Andersson
tomas.andersson@havochovatten.se

Swedish Agency
for Marine and
Water Management

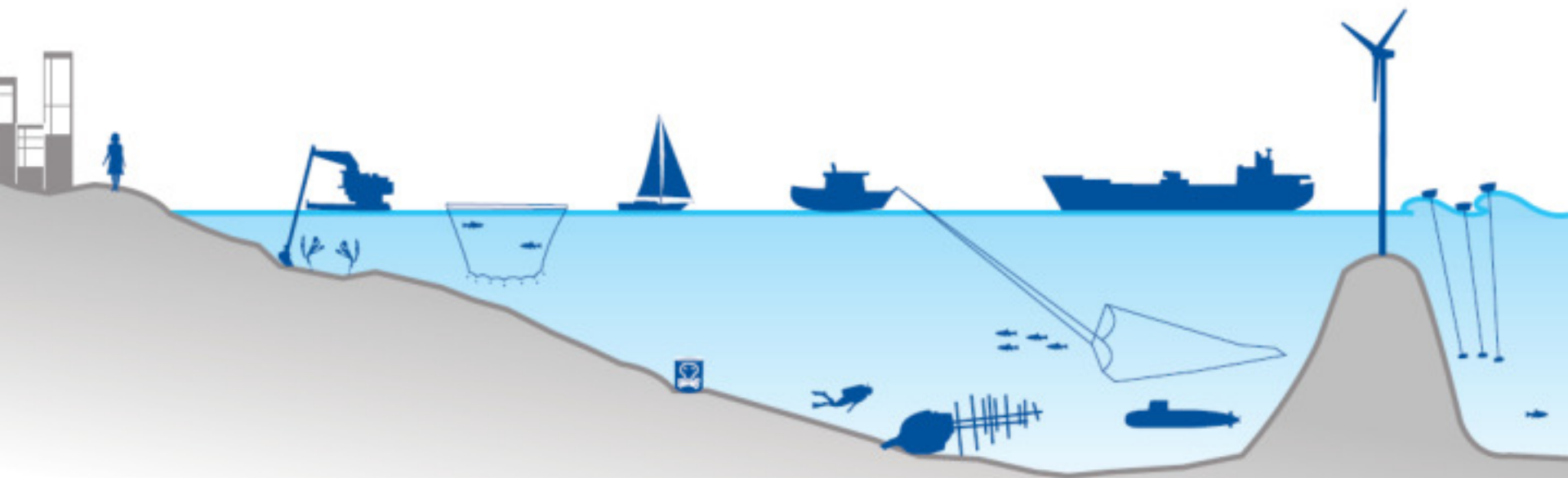
..... about where we want to be in the future



Space

sea floor and below
water body
surface and above

Swedish Agency
for Marine and
Water Management



Swedish point of departure

- the marine environment is not in a sustainable state
- demand for blue growth and regional development
- claims to use the sea are increasing (incl. new uses)
- there are needs for different kinds of protection.
- normally coexistence between uses, but also conflicting interests
- EU-legislation on marine spatial planning since 2014
- neighboring countries are planning

Swedish Maritime Strategy

(adopted by Gov. 2015)



Swedish MSP

Swedish Agency
for Marine and
Water Management



- Three spatial plans:
Gulf of Bothnia, Baltic Sea and Skagerrak/Kattegat
- One nautical mile (1852 m) from the baseline seawards incl. the Exclusive Economic Zone
- Objective is to contribute to sustainable development
- Plans are to be guiding for municipality comprehensive planning and in licensing
- Plans are to be adopted by the Government
- Government may adopt regulations prohibiting or limiting activities in destined geographical areas

(Environmental Code 4 chapter 9§)

Create conditions for

- Good marine environment and sustainable growth
- Regional development
- Marine green infrastructure and provision of ecosystem services
- Sustainable shipping
- Good accessibility
- Developed energy transfer and electricity production
- Sustainable commercial fishing
- Defence and security

Create preparedness for

- Extraction of minerals and carbon dioxide storage
- Sustainable aquaculture

Planning objectives

...based on strategies,
goals and legislation at
regional, national, EU and
international level

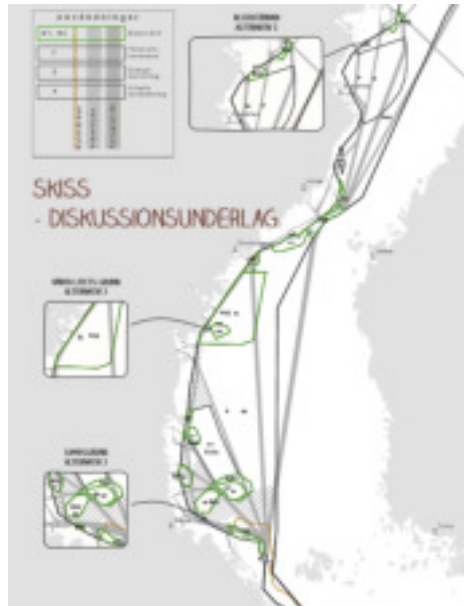


Three step dialogue and delivery

Draft marine spatial plans

published 1st December 2016

Swedish Agency
for Marine and
Water Management



Bothnian Bay



Baltic Sea



Skagerrak/Kattegat

Proposals for marine spatial plans, public consultation 15 Feb- 15 Aug 2018

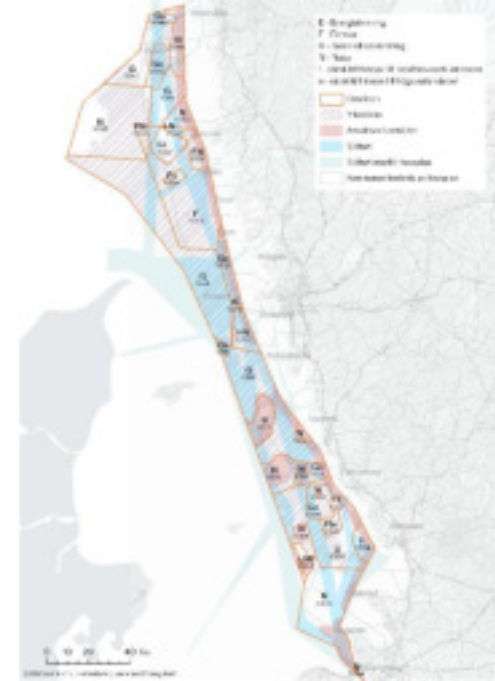
Swedish Agency
for Marine and
Water Management



Bothnian Bay



Baltic Sea



Skagerrak/Kattegat

Plan description

- Vision 2050
- Plan (map)
- Sub-area summaries
- Thematic summaries
- Starting points
- Application and implementation
- Impacts



Impact assessments

- Strategic environment assessment (by law)
- Sustainability appraisal (ecological-social-economic)

SEA as a tool to implement the Ecosystem Approach

The Ecosystem Approach can provide:

- A fitting policy context for application of SEA
- Political incentive for environmental considerations (political will)

SEA can provide:

- Scoping – focus, ecosystem based objectives
- Framework for a systembased holistic approach
- Development and aggregation of knowledge, assessment of plan alternatives
- Consultations and participation
- Alternative development – scenarios, adaptive management
- Integration of social economic evaluation of ecosystem services? → Sustainability assessment

Symphony a tool for a sustainable plan

1 Maps of ecosystem components

2 Maps of marine pressures

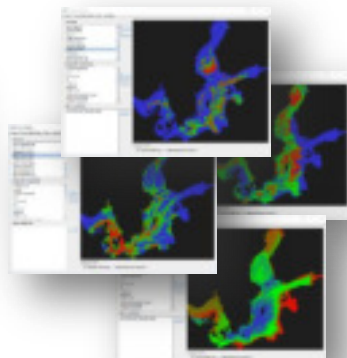
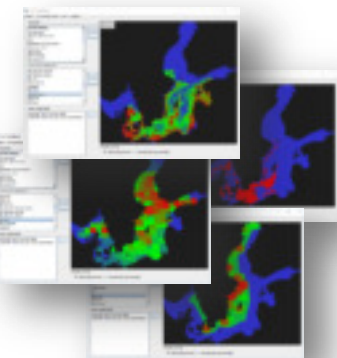
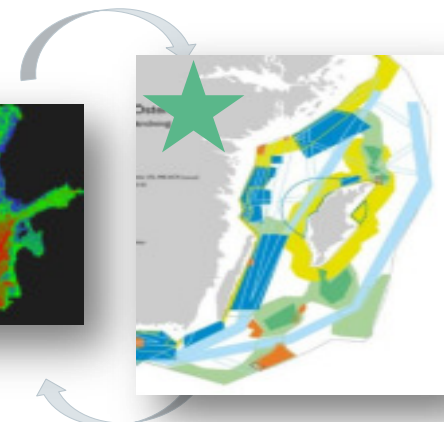
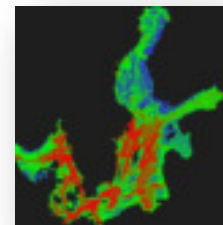
3 Sensitivity matrix based on experts

4 Baseline results

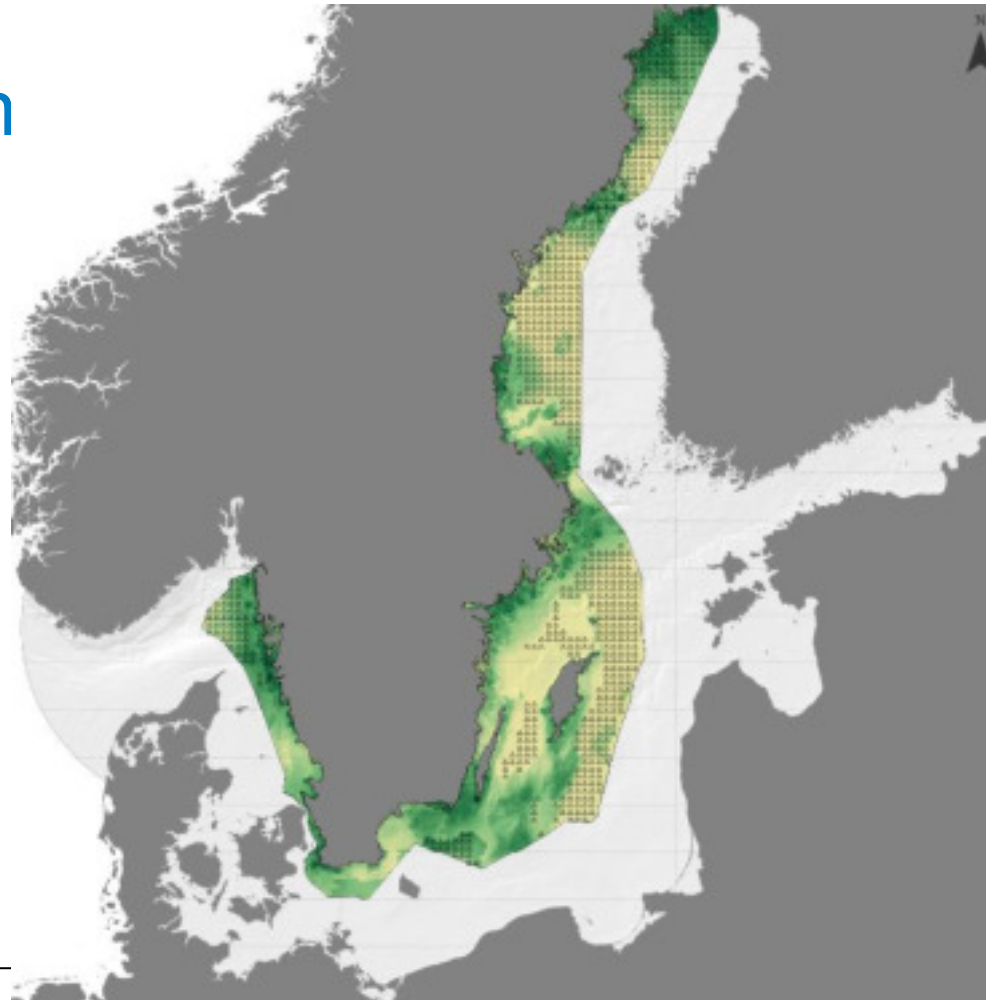
5 Link pressures to marine plan proposal

6 Results for plan iteration

7 A more sustainable marine plan

A large table representing a sensitivity matrix. The table has many rows and columns, with text in the cells representing the results of expert assessments on the sensitivity of different ecosystem components to various marine pressures.

Gröna kartan



Swedish Agency
Marine and
Water Management

Cross border issues, some examples

- Cable from Latvia
- Connecting points with Germany
- Planning of Middle bank (Baltic Sea)
- Shipping – routes and traffic separation schemes
- Commercial fishing
- Delimitation line between EEZ of Sweden and Latvia
- Öresund is one of the most intensiv areas in the world
- Skagaerrak is intensly used

Find out more at
www.havochvatten.se

Swedish Agency
for Marine and
Water Management

Thank you

